

## GKORE FX2 nano 2

## Overview

The GKORE FX2 nano 2 is a small 2-channel LED effect generator and the addition to the USB-C variant FX2 nano. The ultimate tool for anyone who wants to create simple and quick LED effects. This compact device supports the connection for standard 12V up to 24V LED strips or LED modules.

Cinematic lighting with flicker-free 30kHz and fine-tuned 10-bit dimming resolution, the GKORE FX2 nano 2 also offers pre-programmed effects such as fire, blink and fade. The brightness and speed can be controlled via the two integrated potentiometers. The GKORE FX2 series is perfect for small fixtures or prakticals, such as oil lamps or flashlights, where space is crucial.

The integrated trigger input enables easy activation of the set effects or brightness, so that you can realize dynamic and interactive lighting concepts, or activate the GKORE FX2 nano 2 on-cue.

In addition, the firmware is free available as open source and offers the flexibility and adaptability you need for your individual needs. The FX2 series uses the same STM32 MCU. Therefore, it is not necessary to develop separate firmware for all.

## Features

- 2ch high performance LED effect controller
- 12VDC up to 24VDC, constant voltage
- 5 built-in effects and functions, like flame effect and blink
- up to 4A per channel
- Fixed 30kHz PWM frequency, 10Bit dim resolution
- 2 analog potentiometer for brightness control or effect speed
- trigger input to enable presets
- a 4-way DIP switch for selecting presets or effects
- a powerful STM32 MCU
- Firmware is free available as Open Source (MIT License)



## General Functionality

- |                       |  |
|-----------------------|--|
| ▪ Power IN            | 12VDC - 24VDC, max. 8A total   |
| ▪ Current             | 4A per channel   |
| ▪ Temp. working range | -20°C - +60°C  |
| ▪ Frequency           | 30kHz flicker-free PWM   |
| ▪ Dim resolution      | 10Bit  |
| ▪ pre-coded effects   | CCT dimming, Flame Effect, BLINK 50/50, FADE 50/50, Single Channel dim |
| ▪ MCU                 | STM32L031K6T7, 32MHz, 32kB Flash                                       |

## Dimensions

48.00mm x 21.50mm x 4.00mm

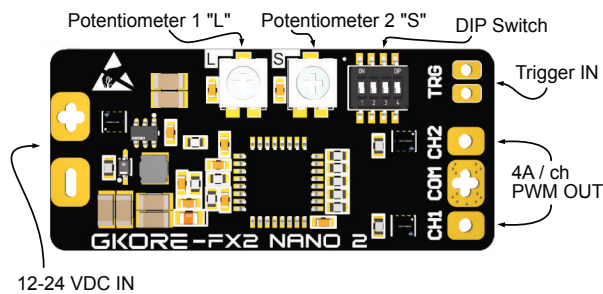
## User Interface

### DIP 1/2

- 00 -> CCT DIM
- 01 -> BLINK 50/50
- 10 -> FLAME EFFECT
- 11 -> FADE 50/50

**DIP3** TRIGGER ENABLE

**DIP4** 2 single channel mode  
L -> CH1 Level  
S -> CH2 Level



## Debugging Interface

GND | NRST | 3.30V

SWDIO  
SWCLK  
3.30V  
GND

